



第二届亚洲临床催眠大会
暨第三届中国临床催眠大会
The Second Asian Congress of Clinical Hypnosis
The Third Chinese Congress of Clinical Hypnosis

第二届亚洲临床催眠大会 暨第三届中国临床催眠大会

The Second Asian Congress of Clinical Hypnosis
The Third Chinese Congress of Clinical Hypnosis

CONNECTION · COLLABORATION · CO-GROWTH

联结·合作·共同成长

主办单位：亚洲催眠学会 北京大学心理与认知科学学院 承办单位：中国艾利克森临床催眠研究院
协办单位：国际催眠学会 北京大学心理咨询与治疗中心 北京致道中和医学研究院 北京致信中和健康管理服务有限公司

The Second Asian Congress of Clinical Hypnosis The Third Chinese Congress of Clinical Hypnosis Travel Guide

August 14-18 Beijing•China



Content

Language Communication.....	3
Visa	3
Airport Wi-Fi Device Rental.....	3
Airport Currency Exchange	5
Congress Hotel	6
Hotel Booking.....	6
How to get to the hotel.....	7
Facilities.....	12
Accommodation Instructions	12
Adapter	12
Network Communicaitons	13
Purchase a SIM at the airport.....	13
VPN	15
Payment and Cash Withdrawal	15
QR Code Payment.....	15
Card Payment	16
Cash Payment.....	16
Transportation.....	17
Map Navigation	17
Shared Bikes	17
Subway (Metro).....	17
Ride-Hailing and Taxi.....	19
High-Speed Rail.....	20
Attractions	20
Shopping Experience	23
Recommended Shopping.....	23
Tax Refund Service	23

Thank you very much for attending the Second Asian Congress of Clinical Hypnosis & the Third Chinese Congress of Clinical Hypnosis. To make your stay easier, we have prepared the following information for your reference. We sincerely wish you a pleasant and memorable stay in China. For more information, please visit the official congress website at hypnosis2025.com. If you have any questions, please feel free to contact us service@zdzh-psy.com. If you encounter any issues while in China, please reach out to Eva Li at +86 132 6419 7990 (mobile).

Language Communication

The official language of China is Chinese Mandarin. To ensure smooth communication, it's recommended to download translation Apps in advance or use the built-in translation tools on your phone.

Visa

Please make sure you have obtained a valid visa to enter China. Visa policies can be found on the website of the Chinese embassy in your country. If you qualify for visa-free entry, please ensure that your passport remains valid for the entire duration of your stay in China. Should you need a visa invitation letter, contact our conference staff promptly at service@zdzh-psy.com.


Airport Wi-Fi Device Rental

Wi-Fi device rental are available for rent at

- Terminal 3 (T3) of Beijing Capital International Airport (PEK)
- Beijing Daxing International Airport (PKX)

Terminal 2 (T2) of Beijing Capital International Airport (PEK) does **not** offer this service. Free shuttle bus is available between Terminal 2 (T2) and Terminal 3 (T3)

Device features

Device	Functions
	<ol style="list-style-type: none"> 1. Hotspot – supplies Wi-Fi to your phone 2. Travel Pass – links to Visa, Mastercard and other bank cards 3. Card-to-QR – after linking a card, QR-code payments are possible 4. Message – receives SMS verification codes 5. Translator & Map

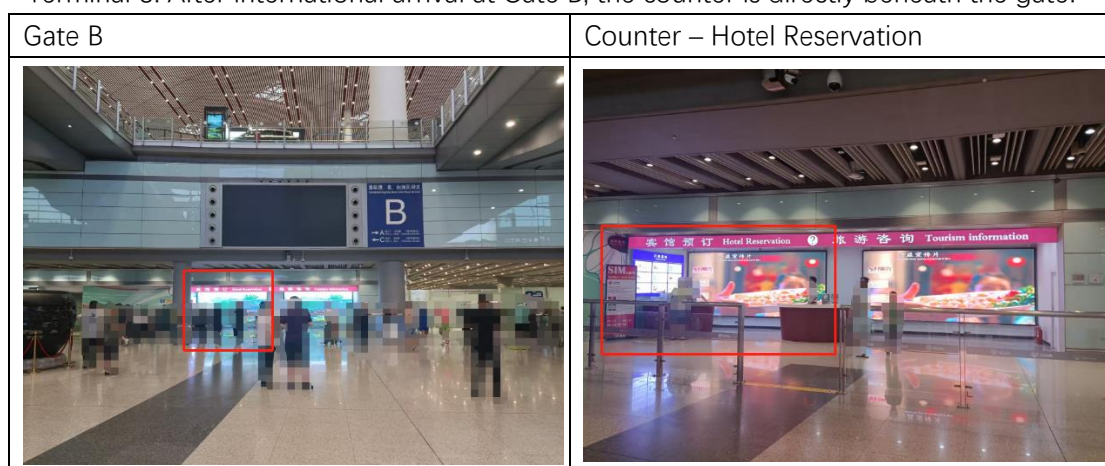
Price	Description	Term of validity
100 CNY	Domestic DATA: 30 GB Local call: 100 mins	7 Days
130 CNY	Domestic DATA: 40GB Local call: 150 mins	10 Days
150 CNY	Domestic DATA: 40GB Local call: 200 mins	15 Days
250 CNY	Domestic DATA: 50GB Local call: 300mins	30 Days

Cost

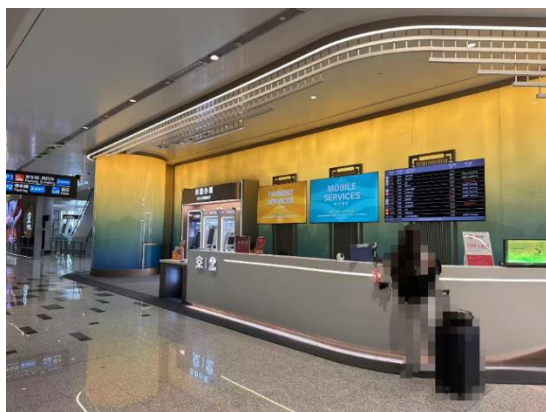
- Deposit: ¥400 (fully refunded on return)
- Usage is currently **free of charge**
- A China Unicom SIM must be inserted; you can buy one at the same counter
- SIM prices:

Rental counters

- Terminal 3: After international arrival at Gate B, the counter is directly beneath the gate.



- Daxing Airport: Opposite the international-arrival exit on Level 1 at the “Beijing Service” counter.



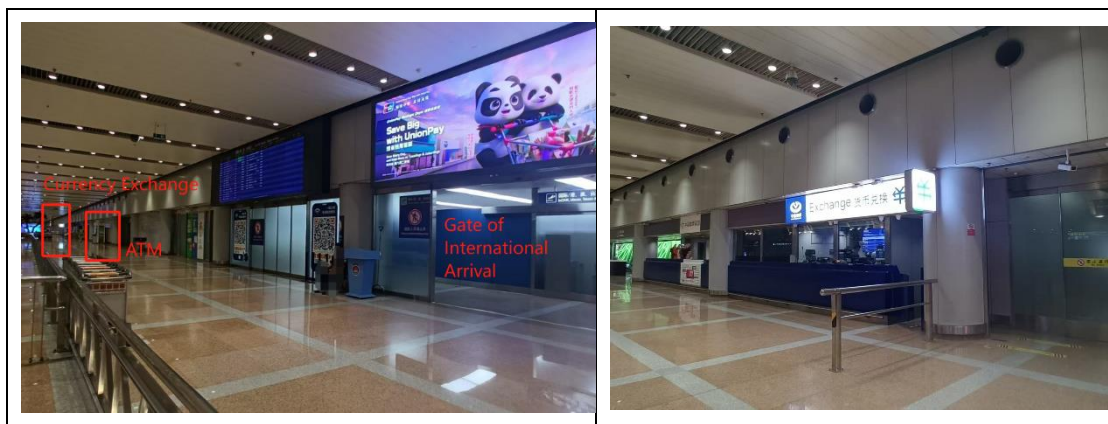
Airport Currency Exchange

Currency Exchange

All three terminals (Beijing Capital International Airport Terminal 2, Terminal 3 and Daxing Airport) offer foreign-exchange services for EUR, USD, RUB, JPY, CAD, AUD, NZD and more. Any leftover RMB can be converted back to foreign currency before departure.

Beijing Capital International Airport Terminal 2

- Level 1 (Arrivals, same as international arrival)
- 24-hour service; limit USD 5,000 equivalent per transaction
- Fee: ¥38
- ATMs accepting Visa, Mastercard, etc. are also on Level 1. Rates and fees are set by your home bank.



Beijing Capital International Airport Terminal 3

- Level 4 (Departures), far end of Corridor E
- 07:00–23:00: up to USD 5,000 equivalent
- 23:00–07:00: up to USD 2,000 equivalent
- Fee: ¥60; if you keep the receipt, the same fee is waived when you convert RMB back to foreign currency before leaving.



- ATMs accepting Visa, Mastercard, etc. are at the far end of Corridor J on Level 4.



Beijing Daxing International Airport (PKX)

- Public zone, Level 4, southern tip of Island C (United Currency Exchange)
- Fees—please inquire on site.

Congress Hotel

Hotel Booking

Please Note:

August is peak travel season in Beijing. Congress Hotel rooms are limited and must be booked in advance. Walk-in guests will be charged the full walk-in rate and rooms may not be available.

Official Congress Hotels

The hotel consists of two separate buildings: Wyndham and Ramada, about a 5-minute walk apart. The keynote speech on the 15th will take place at the Wyndham Hotel, while the concurrent sessions on the 16th and 17th will be evenly distributed between the two hotels.

1. Wyndham Beijing North Hotel ★★★★★ (Main Venue)

Address: No. 317, Changping Road, Changping District, Beijing

Exclusive discounted summer rates: CNY 630 (around 76 Euro)/room/night (king or twin; breakfast included based on occupancy)

Book a Room: https://pw-bjwyndham.zhiketong.com/page/room/list?checkInDate=2025-08-13&checkOutDate=2025-08-17&hotel_id=185494&language=en&brandCorp=eyJ0YXNoljoiYjU3ZDBlZGRhNGRhOTkzYmU1M2RhNDk3NTEzYTkyMzMwMjZmNzhjYiIsbnBhcmFtcyl6IntclmJyYW5kQ29ycElkXCI6MTQ3NzA5LFwiY3JlYXRlVGltZVwiOlwiMjAyNS0wNi0wNiAxNzozMjoxMFwiLFwibWVtYmVyTGV2ZWxjZFwiOjQ0ODg1NCxclnVzZXJJZFwiOjE2MjY1NjI9In0=

Hotel Contact: Ms. Li Huanhuan +86 13601167537

E-mail: reservation@wyndhambeijingnorth.com

2. Ramada Beijing North Hotel ★★★★★ (Some Parallel Sessions)

Address: No. 319, Changping Road, Changping District, Beijing

Exclusive discounted summer rates: CNY 500 (around 60 Euro)/room/night (king or twin; breakfast included based on occupancy)



Book a Room: https://pw-bjramada.zhiketong.com/page/room/list?checkInDate=2025-06-13&checkOutDate=2025-06-14&hotel_id=186438&brandCorp=eyJ0YXNoljoiMzA1NWJkYzFmYmFmN2M2ZGQ1NGViZGRkNmZjZWJhY2I1ZTliNGE5OSIsInBhcmFtcyl6IntclmJyYW5kQ29ycElkXCI6MTQ3NzEwLFwiY3JlYXRIVGltZVwiOlwiMjAyNS0wNi0xMyAxOTowMjoxOVwiLFwibWVtYmVyTGV2ZWxJZFwiOjQ0ODg2NCxclnVzZXJJZFwiOjI5OTY4ODJ9In0=

Hotel Contact: Ms. Li Huanhuan +86 13601167537

E-mail: reservation@wyndhambeijingnorth.com

Cancellation policy

Cancellation Policy (Wyndham & Ramada)

Accommodation fees for international participants will be paid upon arrival at the hotel.

If you need to cancel, please inform us at least one week in advance.

- 8 days or more in advance – first-night charge applies.
- 7 days or less in advance – full stay is non-refundable.
- No cancellations allowed on the day of arrival.

How to get to the hotel

By Taxi

Show the following Chinese to the driver:

请送我至北京龙城温德姆酒店（北京昌平区昌平路 317 号）

Please send me to Beijing Wyndham hotel (No.317 Changping Road, Changping District)

Terminal 3, Beijing Capital International Airport

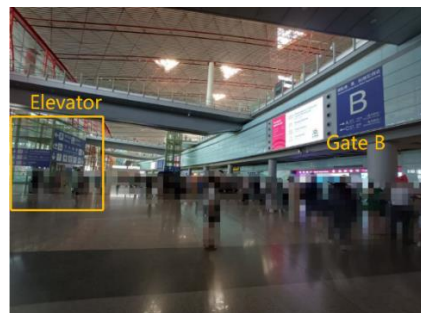
At Terminal 3 of Capital Airport, all international passengers exit through Gate B.

Straight ahead of Gate B you will see a lift. Take it down to **B1**.

Follow the signs to exit the terminal, and you will reach the 24-hour taxi queue.

Please ensure the driver uses the meter. Pay the exact amount shown on the meter upon arrival. All taxis accept cash and QR Code payment—please have small bills or WeChat/Alipay ready.

Come out from Gate B

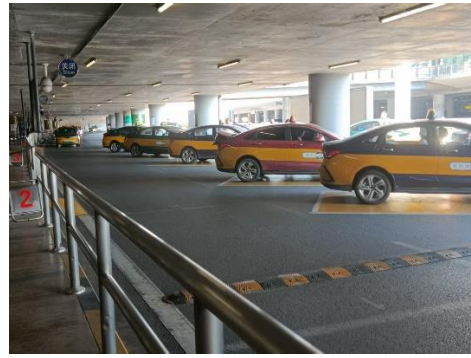


Elevator opposite to Gate B



Follow the instruction on B1

Taxi queuing area



Terminal 2, Beijing Capital International Airport

Upon arrival, simply follow the “Taxi” signs in the arrivals hall and step outside to catch a taxi.



Beijing Daxing International Airport

The taxi queue is located curbside on Level 1 of the terminal; just follow the signs.

By Subway (Metro)

From Beijing Capital International Airport Terminal 2 & Terminal 3 to Congress Hotel
Route: Airport Express – Line 10 – Changping Line (Ticket price in total: around RMB 31)

1. Board at Terminal 2 or Terminal 3 Station
 Take the Airport Express – 2 stops
 Exit at Sanyuanqiao Station
 Walk 190 m
2. Transfer at Sanyuanqiao Station
 Take Line 10 (Outer Loop) – 8 stops
 Exit at Xitucheng Station
 Walk 240 m within the interchange passage
3. Transfer at Xitucheng Station
 Take the Changping Line (toward Changping Xishankou) – 8 stops
4. Exit at Life Science Park Station (Exit B4 South)
5. Walk 1.3 km

Route Diagram

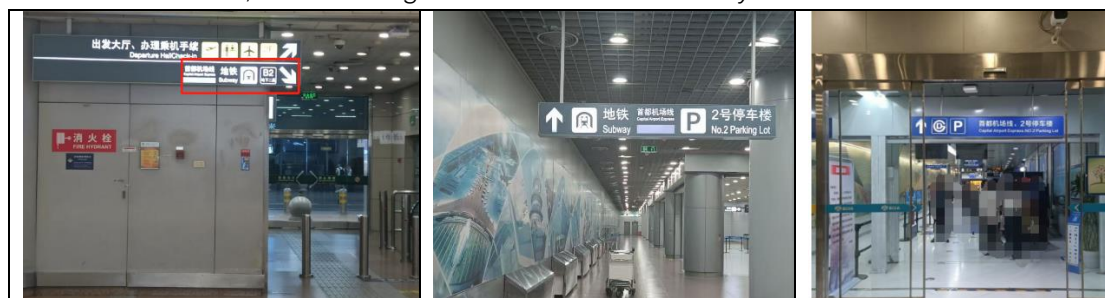


Subway Map



Get to Subway Station from Terminal 2

On the arrivals level, follow the signs to B2 to take the subway.



Get to Subway Station from Terminal 3

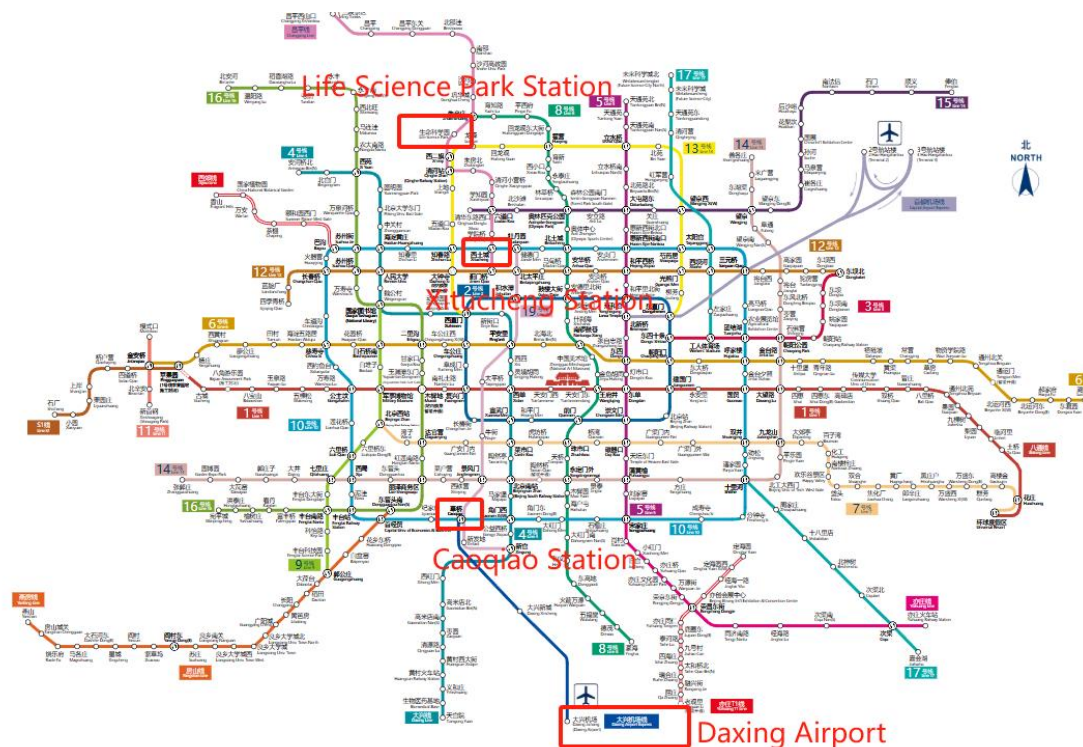
Gate B is on Level 2 of the terminal. After exiting through Gate B, use the Level 2 skybridge

to reach the parking garage, where you can board the Airport Express.



From Beijing Daxing International Airport to Congress Hotel

1. Daxing Airport → Caoqiao
Take the **Daxing Airport Express** (19 min, nonstop).
2. Caoqiao → Xitucheng
Transfer to **Line 10 (inner ring, via Che-daogou → Bagou → Xitucheng)** and ride 11 stops.
3. Xitucheng → Life Science Park
Transfer to **Line Changping (toward Changping Xishankou)** and ride 8 stops .
4. Exit
Leave at **Life Science Park Station, Exit B**, then walk ~10 min to **Wyndham Beijing North**.



Purchase a subway ticket

You can buy tickets either at the counter or at self-service machines. If your Visa, Mastercard or similar card supports contactless payments, you can simply tap it on the gate reader to enter.

At the Counter

Simply ask the staff.

At Self-service Machines

The machines can display in English and accept credit-card payment.

Please make sure you retrieve your ticket from the dispenser—note that the receipt is **not** a ticket. The ticket is a card the same size as a credit card.



Tap Card to Enter

Beijing Subway allows riders to tap and board directly with bank cards: if your contactless Visa, Mastercard, or UnionPay card supports small-value payments, you can simply swipe it at the

gate—no ticket or app required.



Facilitates

Hotel stay includes breakfast. The hotel offers complimentary access to the gym and swimming pool for guests. Several restaurants are available on-site, and meals can be ordered.

Accommodation Instructions

Check-in procedures

Prepare the identification documents, like passport which are valid. The hotel will check and record your passport details.

Complete the Foreigner Accommodation Registration Form

The standard check-in time at hotels in China is usually 2:00 PM, but please check the specific time as per the hotel's policies.

Room facilities

Hotels in China typically provide complimentary disposable toiletries, including toothbrushes, toothpaste, and slippers. The power outlets in China use AC 220V, 50Hz.

Check-out time

Hotels in China usually require guests to check out by 12:00PM. If you check out later than this time, the hotel may charge an additional fee. By special arrangement, check-out is permitted before 14:00 for congress guests. If you need a late check-out, please inform the front desk.

Adapter

Please refer to the illustration for the type of sockets and plugs used in China; make sure you bring the appropriate adapter for your trip.

Socket	Plug
	

Network Communicaitons

Hotels, large shopping malls, and some public places in China offer free WiFi. To use mobile payments anytime and anywhere, it's recommended to connect to the network with the following methods:

- Activate international roaming on your current SIM card.
- Purchase an eSIM card before arriving in China. Many mobile operators offer eSIM cards tailored for international travelers.
- Purchase SIM cards from China Mobile, China Unicom, or China Telecom upon arrival in China.
- Rent a portable WiFi device online before traveling to China, or rent one upon arrival. WiFi device rental services are available at both Shanghai Pudong Airport and Beijing Capital Airport and Beijing Daxing Airport. Please see **Airport Wi-Fi Device Rental (Page 3)** for more informaiton.

Purchase a SIM at the airport

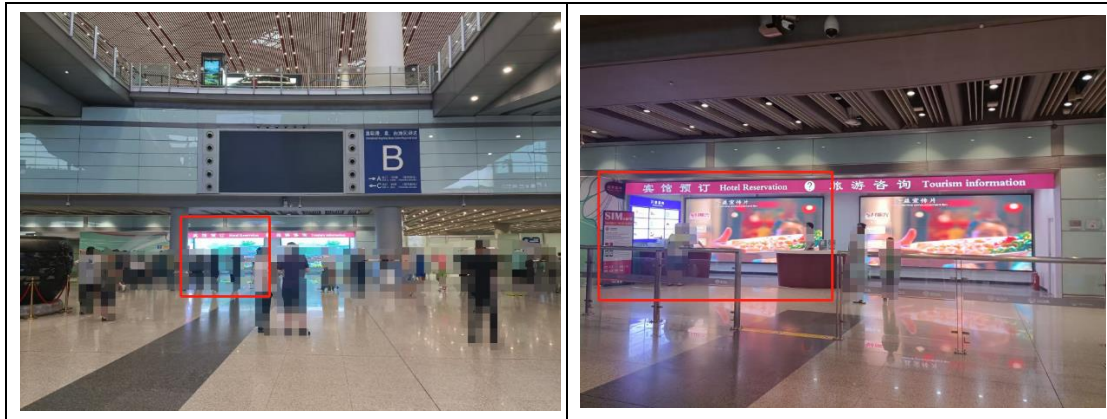
Beijing Capital Airport Terminal 3

All international guests should exit through Gate B at Capital Airport Terminal 3. Upon stepping out of Gate B, you will see a “Beijing Service” counter directly opposite the exit; SIM-card inquiries and purchases can be handled there. Once you have the SIM card, you can share its data as a hotspot with your phone. Please make sure your phone has an extra SIM slot or that you have another device available. China Unicom and China Mobile are both leading telecom providers in China; their rates may differ slightly.

China-Unicom

Terminal 3: After international arrival at Gate B, the counter is directly beneath the gate.

Gate B	Counter – Hotel Reservation
--------	-----------------------------

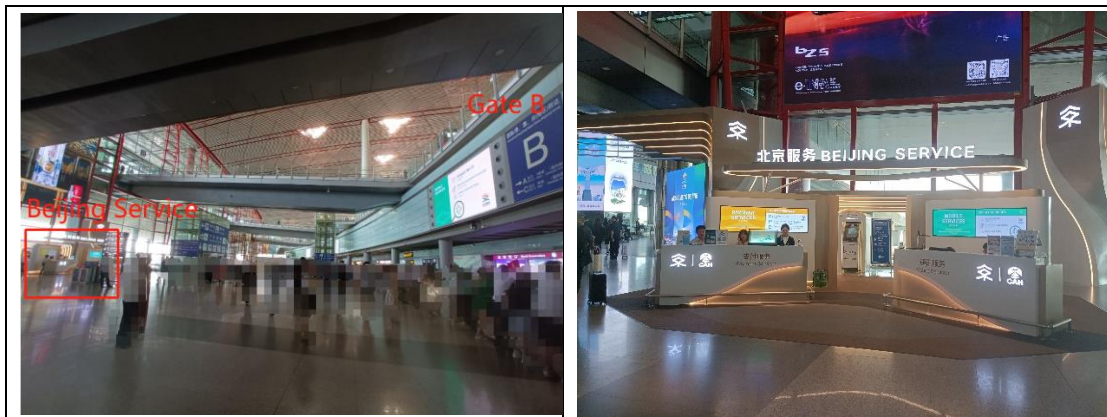


SIM Card Price reference

Price	Description	Term of validity
100 CNY	Domestic DATA: 30 GB Local call: 100 mins	7 Days
130 CNY	Domestic DATA: 40GB Local call: 150 mins	10 Days
150 CNY	Domestic DATA: 40GB Local call: 200 mins	15 Days
250 CNY	Domestic DATA: 50GB Local call: 300mins	30 Days

China-Mobile

Terminal 3: After international arrival at Gate B, the counter is opposite to the gate.



SIM Card Price reference

Price	Description	Term of validity
100 CNY	Domestic DATA: 30 GB Local call: 100 mins International call: 50 CNY	7 Days
120 CNY	Domestic DATA: 35GB Local call: 150 mins International call: 60 CNY	10 Days



150 CNY	Domestic DATA: 50GB Local call: 200 mins International call: 70 CNY	15 Days
250 CNY	Domestic DATA: 80GB Local call: 300mins International call: 100CNY	30 Days

VPN

Due to differences between China's and international internet regulations, certain apps (such as Google, Gmail, WhatsApp, Facebook, and Instagram) cannot be accessed directly within China. Before arriving, please download and purchase a reliable VPN app in advance to ensure uninterrupted access to these services.

Payment and Cash Withdrawal

QR Code Payment

- QR code payments are accepted almost everywhere in China.
- Download Aripay or WeChat in advance and linking your international bank card to enjoy China's convenient mobile payments.
- Use international wallets like Alipay and UnionPay Mobile QuickPass.

Installation

- Requirements for linking bank cards to WeChat Pay or Alipay vary by country. If your country supports this feature, please follow the steps below to install and set up the service.
- Bring an overseas Visa/MasterCard, install WeChat Pay and Alipay, and you can pay by QR code in Beijing just like a local.
- 3-step quick setup

Download WeChat or Alipay from any app store.

Sign up with your overseas phone number → open Wallet → Add Foreign Bank Card → enter card number, expiry, CVV and finish 3-D Secure verification.

Scan or show your QR code to pay—works on the subway, in restaurants, supermarkets and ride-hailing apps.

Limits & tips

- Transactions up to CNY 200 are free of extra fees; above that a ~3 % cross-border fee may apply.
- Wallet-to-wallet transfers, red-packets and investment products are not available to overseas cards.



- Keep your passport handy for real-name verification

Card Payment

- UnionPay is China's local card network. Compared to international cards like Visa and MasterCard, UnionPay cards are accepted by more merchants across China.
- Five-star hotels, large shopping malls, duty-free shops, and other foreign-related service venues accept overseas bank cards like Visa, MasterCard, JCB, American Express cards, etc.
- Get a UnionPay card for easier payments within China. Some of China's international banks, like the Bank of China, have branches worldwide, where you can inquire about card applications.
- Apply for a Union Pay debit card upon arrival if you plan to stay in China for a long period.

Cash Payment

Cash carrying requirements

- The maximum amount of RMB brought into China is RMB 20,000.
- Carrying foreign currency cash exceeding the equivalent of USD 5,000, you should complete a China Customs Baggage Declaration Form for Incoming/Outgoing Passengers upon entry and declare it to customs.

Currency exchange

- In China, you can exchange major currencies such as USD, GBP, EUR, HKD, JPY, AUD, CAD, and SGD.
- A few banks, like Bank of China, also support the exchange of additional currencies such as THB, KRW, VND, and INR.
- Exchange for US dollars or euros before arriving in China for the currencies not listed above.
- If you need to exchange currency at the airport, please see the “**Airport Currency Exchange**” section.

Obtain cash

- Exchange rates may differ between countries.
- Exchange currency at airport exchange counters, self-service machines, and bank branches after arriving in China. It's recommended to exchange currency at bank branches, since the rates are generally lower.
- Use international bank cards to withdraw from ATMs. To check if your card can be used for withdrawals, look for the card network logo on the ATM. Most ATMs at airports and



five-star hotels in China support foreign card withdrawals.

Prepare change

- Prepare some small changes for use in vending machines, subway ticket machines, and other automated payment systems.
- Exchange for small bills at airport currency exchange counters or any bank branch after arriving in China. Available denominations include RMB 1, RMB 5, RMB 10, and RMB 20.

Transportation

Map Navigation

Download Chinese local maps and navigation tools such as Amap or Baidu maps, which provide public transportation information and route navigation

iPhone users with international roaming enabled can use the build-in maps on their phones directly.

Shared Bikes

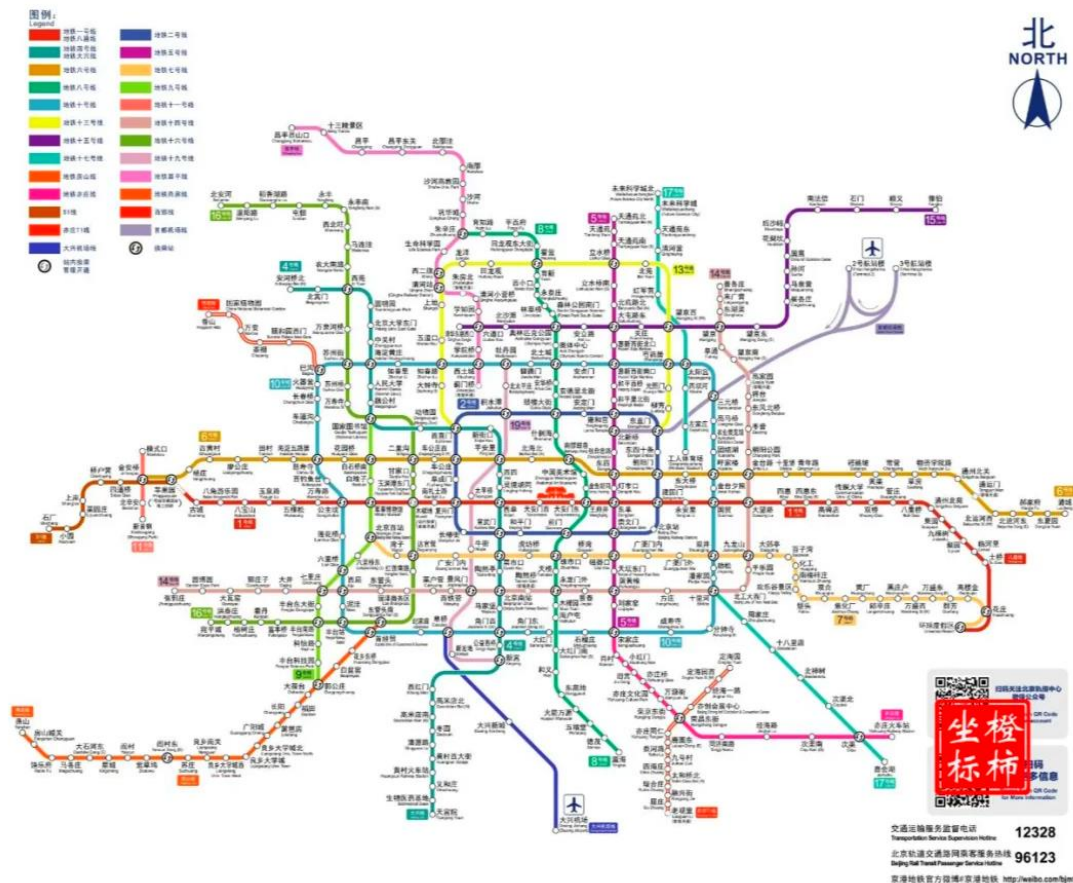
Shared bikes are a popular and eco-friendly short-distance travel option in Chinese cities.

- Scan the QR code on the blue (Hello Bike App), yellow (Meituan App), or green (DiDi App) bikes parked on the street via a mobile phone App to unlock and ride.
- Park the bike and end the trip in the App after reaching your destination. In some cities, bikes must be parked in designated areas.
- The cost of shared bikes is typically based on the riding time, usually around RMB 1-2 per 30 minutes.

Subway (Metro)

- Purchase a one-way ticket at the ticket vending machine or ticket counter using cash or a bank card, or recharge a transportation card (Beijing Pass, Shanghai Pass, etc.).
- Use the Ali pay or WeChat transit QR code to scan in and out of the station. Additionally, the Beijing Subway supports direct card swiping for entry with foreign Visa, MasterCard, and Union Pay cards.
- Subway stations usually have security check equipment, and all passengers must undergo a security check.
- Beijing Subway (excluding the Capital Airport Express and Daxing Airport Express) uses a distance- and time-based fare system:
 - 0–6 km: CNY 3

- 6–12 km: CNY 4
- 12–22 km: CNY 5
- 22–32 km: CNY 6
- Beyond 32 km: each additional CNY 1 adds another 20 km; no upper limit
- Maximum stay in the paid area is 4 hours; overtime charge is CNY 3 (CNY 10 on the Capital Airport Express).



Map of Beijing subway, please check: <https://map.bjsubway.com/>

Purchase a subway ticket

You can buy tickets either at the counter or at self-service machines. If your Visa, Mastercard or similar card supports contactless payments, you can simply tap it on the gate reader to enter.

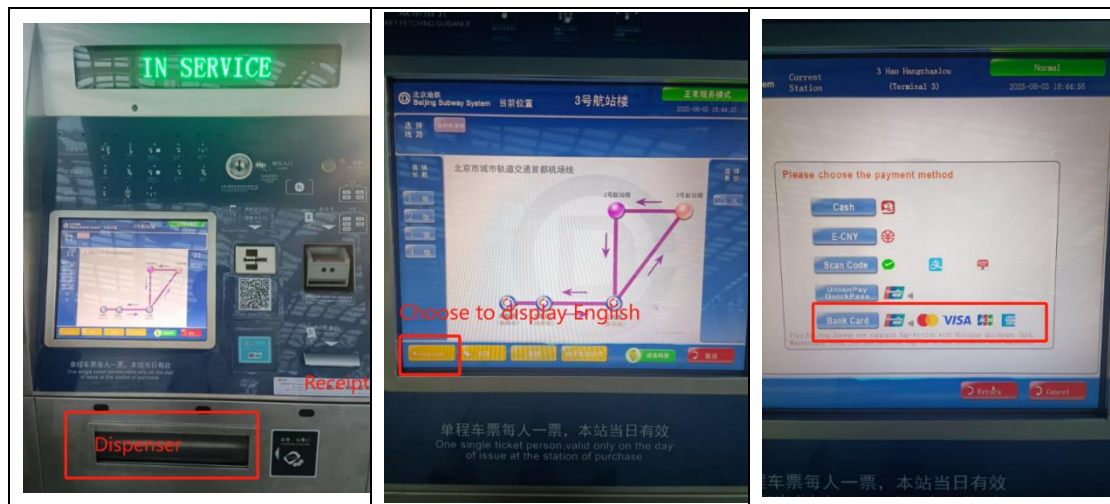
At the Counter

Simply ask the staff.

At Self-service Machines

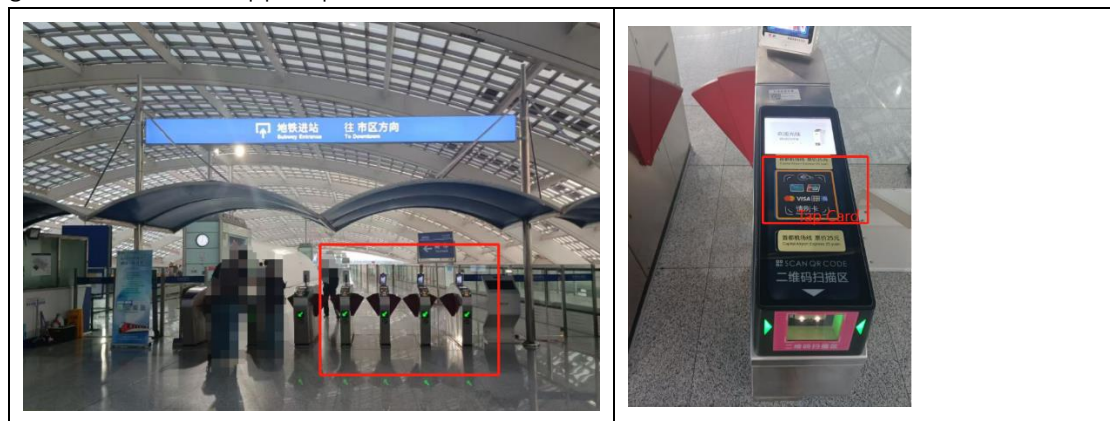
The machines can display in English and accept credit-card payment.

Please make sure you retrieve your ticket from the dispenser—note that the receipt is **not** a ticket. The ticket is a card the same size as a credit card.



Tap Card to Enter

Beijing Subway allows riders to tap and board directly with bank cards: if your contactless Visa, Mastercard, or UnionPay card supports small-value payments, you can simply swipe it at the gate—no ticket or app required.



Restricted Items on the Metro

- Dangerous items are strictly forbidden.
- Knives with blades longer than 150 mm.
- More than two ordinary lighters or more than two small boxes of safety matches.
- Inflatable balloons.

Ride-Hailing and Taxi

- Hailing a taxi in China is very convenient. Most cities in China offer ride-hailing services.
- Download ride-hailing Apps like DiDi (similar to Uber) to book taxis or private cars in advance and pay via bankcard, Ali pay, or WeChat.
- Queue in the designated taxi waiting area and pay by the meter at airports and train stations.



High-Speed Rail

Intercity transportation in China mainly relies on high-speed rail.

Purchase tickets through the 12306 website (<https://www.12306.cn/en/index.html>), the 12306 CHINA RAILWAY App, or at the ticket counter at the station.

- High-speed rail tickets are generally available 15 days in advance. Plan your trip ahead and book tickets online.
- The official website and App allow email registration. After completing real-name verification with your passport, you can pay by bank cards, Alipay, or WeChat.
- High-speed rail seats are available in business class, first class, and second class. The carriages are equipped with air conditioning, power outlets, meals, and drinks. Some trains also offer free WiFi.

Restricted Items on High-Speed Rail:

- Dangerous items are strictly forbidden.
- Knives with blades longer than 60 mm are prohibited for carry-on but can be checked in.
- You may carry low-alcohol beer and wine, while unopened liquor is limited to a maximum of 3,000 ml. No more than 50 cartons of cigarettes are also allowed to bring.

Attractions

- Most major tourist attractions in China offer both offline ticket purchase and online reservation options.
- Book tickets online in advance to avoid long queues at ticket counters or visitor's number limitation holidays.
- Reserve through popular travel Apps (such as Ctrip), the official Websites of the attractions, mini-programs, and other online Platforms.
- Bring your passport and other valid identification documents to buy tickets on-site. Consult the ticket counter for information.

If you prefer to purchase tickets on your own, the official websites for the attractions are listed below:

- The Palace Museum (Forbidden City)

<https://intl.dpm.org.cn/index.html?l=en>

- Summer Palace

<https://www.summerpalace-china.com/English/index.htm>

- Temple of Heaven

<https://www.tiantanpark.com/english/>

- Great Wall (Badaling)

<https://www.badaling.cn/website/pc/index.html#/home>

Places of Interest

The Forbidden City

The Forbidden City, once the imperial palace of the Ming and Qing dynasties, is the world's largest and best-preserved wooden architectural complex. Summer tickets disappear fast; advance reservations are required—tickets are released seven days ahead at 20:00 each evening; same-day tickets are not sold.



The Summer Palace

The Summer Palace is China's largest and best-preserved imperial garden, where Kunming Lake meets Longevity Hill in a scene often called the “Museum of Royal Gardens.” Summer tickets disappear fast; reserve at least 1–7 days ahead on the official site.



The Great Wall

The Great Wall—an awe-inspiring 21,000-kilometre dragon of stone and brick—was first built over 2,300 years ago to defend China's northern frontier and is now a UNESCO World Heritage icon. Summer tickets disappear fast; reserve at least 1–7 days ahead on the official site.



The Temple of Heaven

A 600-year-old masterpiece of Ming-Qing architecture, was where emperors prayed for bountiful harvests amid serene gardens and the iconic circular Hall of Prayer. Entry is limited; reserve 1–3 days in advance—tickets release daily at midnight and same-day slots are not sold

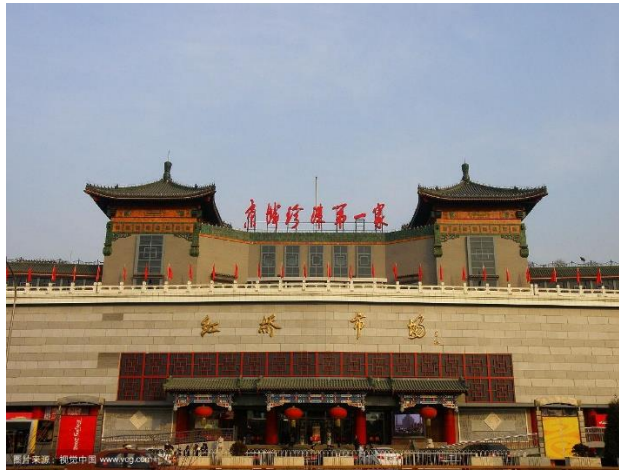


Shopping

Pearl Market

(Red Bridge Market)

A stone's throw from the Temple of Heaven, Hongqiao Pearl Market (Red Bridge Market) is Beijing's four-storey “treasure chest”: freshwater to Tahitian pearls, silk robes, gadgets and souvenirs—all under one roof. Come ready to **bargain** and allow about an hour for the full experience



Sanlitun

Sanlitun is Beijing's buzzy nightlife heart—think neon lanes packed with craft-beer bars, rooftop lounges, and flagship fashion stores. Come at dusk to sip cocktails and people-watch until the small hours.



Shopping Experience

Recommended Shopping

Traditional handicrafts

Porcelain, silk, embroidery, jade, cloisonne, and other traditional Chinese crafts have high artistic value and offer a unique way to know Chinese culture.

Tea

China has a long history of tea culture, and popular varieties include green tea, black tea, oolong tea, and Pu'er tea.

Electronics

Mobile Phones, tablets, smart wearables, and more, including brands like Transsion, Xiaomi, Real-me, DJI drones, and various headphones and smartwatches.

Cuisine

Various regional snacks and foods, such as Peking Duck, Sichuan spicy sauces, and Cantonese dim sum, make great souvenirs to share with family and friends.

Clothing and footwear

From high-end Chinese brands to affordable fashion, there is a wide range of clothing, shoes, bags, and more to choose from.

Travel souvenirs

T-shirts, keychains, postcards, dolls, and other items featuring designs and patterns from major tourist attractions are affordable, practical, and easy to carry.

Tax Refund Service

Non-residents who have stayed in domestic region of China(not including Chinese Hong Kong, Chinese Macau or Chinese Taiwan) for no more than 183 days can claim a VAT refund on eligible items purchased at tax-refund stores upon departure.

Tax refund conditions

- The total value of tax -refunded items purchased by the same visitor on the same day at the same tax refund store must reach RMB 500.
- The purchased tax-refunded items must be carried by the visitor or checked in as luggage when leaving China.
- The tax-refunded items must not have been used or consumed.

- The visitor's departure date must be within 183 days from the date of his or her last entry into China.
- The purchase date of the tax-refunded items must be within 90 days before departure.
- For refunds exceeding RMB 10,000, a bank card is required for the transfer. For refunds below RMB10,000, the visitor can choose either cash or bank card transfer for the refund.

Tax refund currency

The tax refund currency is RMB. The tax will be refunded by cash or bank transfer.

For specific regulations on departure tax refunds, please refer to the information published on the website of the State Taxation Administration of China:

<https://www.chinatax.gov.cn/?spm=5176.28103460.0.0.21065d27DWWhrou>